



**FISU**  
WORLD  
UNIVERSITY  
GAMES  
SUMMER



**FISU**  
WORLD  
UNIVERSITY  
GAMES  
SUMMER



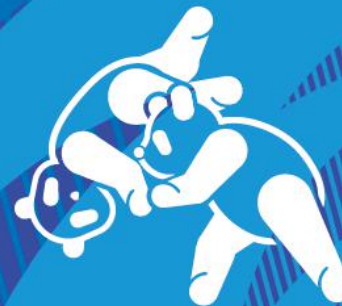
**CHENGDU 2021 FISU WORLD  
UNIVERSITY GAMES**

CHENGDU 2021 FISU WORLD UNIVERSITY GAMES

# CHENGDU 2021 FISU WORLD UNIVERSITY GAMES

## JUDO TECHNICAL HANDBOOK

(VERSION 1.0)



*Chengdu Makes Dreams Come True*

## Table of Contents

1.	Welcome Messages .....	4
1.1.	FISU President .....	4
1.2.	Organising Committee .....	6
2.	Abbreviations .....	18
3.	Contacts .....	20
3.1.	FISU Secretariat .....	20
3.2.	Organising Committee .....	20
3.3.	The International Judo Federation (IJF) .....	20
4.	General Information .....	22
4.1.	Country and City .....	22
4.2.	Key Facts and Figures .....	25
5.	Service Information .....	28
5.1.	Arrival and Departure .....	28
5.2.	FISU World University Games Village .....	28
5.3.	Accreditation .....	32
5.4.	Transportation .....	34
5.5.	Food and Beverages .....	36
5.6.	Medical Care .....	38
5.7.	Ticketing .....	40
5.8.	Climate and Weather .....	40

6.	Competition Information .....	42
6.1.	Technical Committee .....	42
6.2.	Technical Regulations .....	42
6.3.	Competition Format .....	46
6.4.	Sport Entries and Eligibility .....	47
6.5.	Competition and Training Venues .....	48
6.6.	Competition Schedule .....	48
6.7.	Training Schedule .....	50
6.8.	Technical Meetings .....	50
6.9.	Technical Officials .....	52
6.10.	Protest and Appeal .....	53
6.11.	Late-Athlete Replacement Policy .....	54
6.12.	Equipment and Uniforms .....	55
6.13.	Doping Control .....	55
6.14.	Awards and Medals .....	57
6.15.	Media Interviews .....	59
6.16.	Timing and Scoring .....	59
6.17.	Results .....	59
6.18.	Sport Information Services .....	59
7.	Transportation Schedule .....	62
8.	Appendices .....	64

# 1. Welcome Messages



## 1. Welcome Messages

### 1.1. FISU President

Dear friends,

On behalf of everyone at the International University Sports Federation (FISU), I am delighted to welcome you to Chengdu, for the FISU World University Games. Please accept my best wishes for a safe and successful experience, and my gratitude for your own contribution to that safety and success. It is without doubt that the challenges faced by the Organising Committee of Chengdu 2021 have been without precedent.

It is also without doubt that as the world comes to terms with a new reality, much greater emphasis is being placed on public health and alternative ways of maintaining international participation.

As a result, the need for university sport for millions of university students around the world has never been greater, as restrictions due to the pandemic continue to limit access to sport activities. With it, so is the need for FISU's vision of positively shaping tomorrow's members of our global community through their experiences of international university sport.

This is why my colleagues and I are pleased to see that despite the challenging circumstances, the Chengdu 2021 Organising Committee has continued to move effectively towards delivering an exceptional FISU World University Games that places athlete welfare at its core.

This handbook represents a significant part of this progress. It has been created to provide you with comprehensive information regarding various functional areas, that will help you contribute to the success of the FISU World University Games.

We are deeply grateful to the Organising Committee of Chengdu 2021 and the supporting public authorities for their continued commitment to deliver on the great promise of an exceptional university sport experience, and for enabling the dreams of thousands to come true. FISU remains by your side to help you with every step along the way.

With warmest regards,

EDER Leonz  
Acting President of the International University Sports Federation

## 1.2. Organising Committee

Dear friends,

The Chengdu 2021 FISU World University Games will take place in Chengdu in June 2022. On behalf of the Organising Committee and the Ministry of Education of the People's Republic of China, I hereby extend a warm welcome and sincere greetings to all of you.

The FISU World University Games will bring together the world's youth and serve as a global bridge for cultural exchange. In addition, they will be a great boost to education and sports at universities worldwide. I hope that the young athletes participating in these Games will get to know one another better, continue making progress and push their own boundaries as they compete, learn and communicate. This is how they can manifest their ambitions and commitment in this era for building a community with a shared future for humanity.

The Organising Committee will work with the authorities of Sichuan Province and Chengdu to provide you with the best services, as this will help you deepen your knowledge about China's ancient history and modern dynamism. We are confident that the Chengdu 2021 FISU World University Games will be hugely successful and extremely exciting as an international sports gathering.

Again, welcome to Chengdu. I hope that you have a memorable stay and make your dreams come true here.

May the Chengdu 2021 FISU World University Games be a big success!

HUAI Jinpeng

Minister of Education of the People's Republic of China

President of the Organising Committee of the  
Chengdu 2021 FISU World University Game

Dear friends,

The FISU World University Games form the world's largest sports gathering for university students. On behalf of the General Administration of Sport of China and the Organising Committee of the Chengdu 2021 FISU World University Games, I hereby extend my warmest welcome and sincerest greetings to all of you.

We have invited university athletes from across the world to this global event combining sports, education and culture. Sports promote health, and young people create the future. The Chengdu 2021 FISU World University Games will be held during the fight against the COVID-19 pandemic. As such, it has a special significance in terms of inspiring the young to confront challenges, enhancing the global awareness of sports and health, and shaping a brighter future for humanity. The Organising Committee will spare no efforts to provide premium services as we strive to present the world with a grand sports and culture gathering that sparkles with the vitality of youth.

We have opened our arms to university athletes, coaches, judges and other friends from around the world. Here in Chengdu, you will make your dreams come true and develop new friendships.

May the Chengdu 2021 FISU World University Games be a complete success!

GOU Zhongwen

Minister of the General Administration of Sport of China

President of the Organising Committee of the  
Chengdu 2021 FISU World University Games

Dear friends,

The Chengdu 2021 FISU World University Games will begin on 26 June 2022 in Chengdu, Sichuan, the People's Republic of China. On behalf of the Sichuan Provincial People's Government and the province's 91 million people, I would like to extend a warm welcome to guests from countries/regions around the globe.

Sichuan is a powerhouse of science and education, and it is also a populous economic stronghold in West China. It's home to the giant panda, one of the country's national treasures. Steeped in history and blessed with scenic beauty, it is renowned as the Land of Abundance, where people enjoy the comforts and pleasures that life has to offer. Chengdu, the capital of the province, is a poetic and picturesque city. It is West China's center of economy, science, technology, finance, cultural creativity and international exchanges. It is also an international transportation and communications hub. As one ancient Chinese poem goes, "Out of the heavenly place created Chengdu, where every single house is like a part of a breathtaking painting." Today's Chengdu is accelerating its effort to build itself into a park city practicing the new development philosophy and embracing the world with greater openness and inclusiveness.

The FISU World University Games is the most influential sports gathering for young people around the world. Since winning its bid to host the Games, Sichuan and Chengdu have been preparing meticulously. Our hospitable people look forward to meeting the world's university athletes – athletes who will make their dreams come true and experience memorable moments in Chengdu.

Let's join hands to secure first-rate preparation and organisation for an exceptional and successful Chengdu 2021 FISU World University Games that lives up to international standards, represents Chinese characteristics and Sichuan features, and showcases the charm of youth. Let's write a new chapter for the FISU World University Games.

HUANG Qiang

Governor of Sichuan Provincial People's Government

Executive President of the Organising Committee of the  
Chengdu 2021 FISU World University Games

Dear friends,

In June 2022, the FISU World University Games will be held in Chengdu. The event is made possible by our achievements in this glorious era and will gather young people from various parts of the world. On behalf of the Federation of University Sports of China, I hereby extend a warm welcome to all delegations, as well as a heartfelt thanks to the International University Sports Federation (FISU) and everyone who has supported Chengdu in its efforts to host the Games.

Under the auspices of FISU and the Organising Committee, Chengdu is making smooth progress in its preparations for the Games, and it is taking on a new look to welcome university athletes and guests from around the globe.

In June 2022, the flame of the FISU World University Games will be lit in Dong'an Lake Sports Park Stadium in Chengdu, where we will once again extend a warm welcome to all the athletes that will be competing in Chengdu. As you uphold the spirit of sportsmanship and tenacity and fulfill your aspirations during the Games, you will be engaging in heart-to-heart communication with different cultures, experiencing the charming diversity of civilisations, and manifesting the power of youth to help create mankind's future.

We are convinced that the Chengdu 2021 FISU World University Games will promote sports among young people in China and the world at large. Friendship among countries will be strengthened, thus boosting global development.

May the Chengdu 2021 FISU World University Games be a huge success!

HAO Ping

President of the Federation of University Sports of China

Vice President of the Organising Committee of the  
Chengdu 2021 FISU World University Games



Dear friends,

The FISU World University Games will take place from 26 June to 7 July 2022 in Chengdu. On behalf of Chengdu Municipal People's Government and 16 million Chengdu citizens, I would like to extend a warm welcome to the young athletes, officials, media friends and guests arriving from all over the world, and I would like to express my gratitude to everyone who has supported us in preparing for the Games.

Since ancient times, Chengdu has been renowned as “the Land of Abundance”. This is a city with a profound civilisation of more than 4500 years and an urban history of 2300 years. Featuring both natural beauty and cultural profundity, it is home to the giant panda, China's national treasure, and it is one of the first National Famous Historical and Cultural Cities. Chengdu boasts a pleasant climate, intoxicating scenery, and prosperity. Its natural and cultural endowments have given rise to an athletic lifestyle and have imprinted sports into the city's character. In recent years, the city has improved its sports facilities and gained considerable experience in organising events. It is now well positioned to host large, multi-sport events.

The Chengdu 2021 FISU World University Games will bring fresh vitality and a sense of honour to this park city at the foot of snowy mountains. As we are in full gear preparing for the Games, we also care how Chengdu, its people and its various sectors can benefit as a result. Our world-class facilities, thorough organisation and considerate services will make the Games a great success and will write a wonderful chapter in the history of the FISU World University Games.

WANG Fengchao

Mayor of Chengdu Municipal People's Government

President of the Executive Committee of the  
Chengdu 2021 FISU World University Games



## 2. Abbreviations



## 2. Abbreviations

Abbreviations	Glossary
CEO	Chief Executive Officer
CMI	International Medical Committee
ITC	International Technical Committee
FISU	International University Sports Federation
HoD	Head of Delegation
IF	International Federation
ITO	International Technical Official
NF	National Federation
NTO	National Technical Official
NUSF	National University Sports Federation
OAS	FISU Online Accreditation System
OC	Organising Committee
FISU WUG	FISU World University Games
TCC	Technical Committee Chair
TO	Technical Official
WADA	World Anti-Doping Agency
TD	Technical Delegate
CIC	International Control Committee
SIC	Sport Information Centre
TUE	Therapeutic Use Exemption
MAC	Main Accreditation Centre
IJF	The International Judo Federation

## 3. Contacts



### 3. Contacts

#### 3.1. FISU Secretariat

Acting President: EDER Leonz  
Tel.: +41 (0) 216926400  
E-mail: [summergames@fisu.net](mailto:summergames@fisu.net)  
Website: [www.fisu.net](http://www.fisu.net)  
Secretary General/CEO: SAINTTROND Eric  
Address: Quartier UNIL-Centre, Batiment Synathlon, 1015 Lausanne,  
Switzerland

#### 3.2. Organising Committee

President: HUAI Jinpeng  
GOU Zhongwen  
Executive President: HUANG Qiang  
President of the Executive Committee: WANG Fengchao  
Address: Building #4, Tianfu International Financial Centre, 996 North  
Tianfu Avenue, Chengdu, Sichuan, China  
Tel.: +86 (28) 62033026  
Fax: +86 (28) 62033026  
E-mail: [delegation\\_service@2021chengdu.com](mailto:delegation_service@2021chengdu.com)  
Website: [www.2021chengdu.com/cn/](http://www.2021chengdu.com/cn/)

#### 3.3. The International Judo Federation (IJF)

President: VIZER Marius  
Tel: +36 1 302 7270  
Email: [president@ijf.org](mailto:president@ijf.org)  
General Treasurer: AL TAMIMI Naser  
Tel: +97 (150) 444 7743  
Email: [gt@ijf.org](mailto:gt@ijf.org); [naser.tameemi@gmail.com](mailto:naser.tameemi@gmail.com)  
Secretary General: ROUGE Jean Luc  
Tel: +33 (14) 052 16 35  
Email: [gs@ijf.org](mailto:gs@ijf.org)  
Address: József Attila str. 1, 1051 Budapest, Hungary  
Email: [office@ijf.org](mailto:office@ijf.org)  
Official website: <http://www.ijf.org>

## 4. General Information



## 4. General Information

### 4.1. Country and City

#### 4.1.1. China

Located in Eastern Asia and next to the Western Pacific Ocean, China has around 9.6 million square kilometers of land area, more than 18,000 kilometers of coastline to the east and south and about 4.7 million square kilometers of water area in its inland and marginal seas. More than 7600 islands are dotted around its territorial waters, with Taiwan being the biggest island, covering 35,798 square kilometers. China borders 14 countries and is adjacent to eight countries via sea. Its administrative division includes four municipalities directly under the Central Government, 23 provinces, five autonomous regions and two special administrative regions. Beijing is its capital city.

#### 4.1.2. Chengdu

Chengdu, known colloquially as "Rong," is the capital of Sichuan province. As a national central city and an emerging world city, it's an important national centre of economics, science, technology, finance, cultural and creative industries and foreign exchange, in addition to being an international transportation and communication hub. Known as the "Land of Abundance", Chengdu is home to approximately 16 million permanent residents. Chengdu is a famous historical and cultural city in China, and it's the origin of the ancient Shu civilisation and Taoism with over 4500 years of urban civilisation and 2300 thousand years of history as a city. As the first Asian city recognised by UNESCO as a City of Gastronomy, Chengdu boasts its world-renowned Sichuan cuisine, its exquisite and diverse local delicacies and its spicy, tongue-numbing and delicious hotpot. Chengdu, the home of the giant panda, China's national treasure, is also home to world natural and cultural heritage sites including Mount Qingcheng, the Dujiangyan Irrigation System and the Sichuan Giant Panda Sanctuaries and it has been recognised as the best tourist destination in China by the National Tourism Administration and the World Tourism Organisation.

### 4.1.3. Climate and Weather Information

#### a. Climate

Located on the west side of the Sichuan basin, Chengdu has a humid sub-tropical monsoon climate characterised by mild weather with no extreme heat during the summer, little snow during the winter, a long frost-free period, plenty of precipitation during the autumn and at night, low wind speeds and high humidity.

Its average annual temperature is 16.1°C. Its average annual precipitation is 922.7 mm, and its average annual humidity 81%.

#### - Temperature (°C)

Year		Jan.	Feb.	Mar.	Apr.	May.	Jun.	Jul.	Aug.	Sept.	Oct.	Nov.	Dec.	Ave
2018	Average	5.7	8.2	15.8	19.3	22.4	24.1	25.9	27.2	20.9	16.4	11.3	6.9	17.0
	High	18.2	22.7	28.2	32.1	36.6	36.0	37.0	37.4	36.7	26.6	24.3	18.5	37.4
	Low	-5.3	-1.7	3.8	2.4	11.9	14.9	20.1	20.1	15.8	7.4	1.9	-3.3	-5.3
2019	Average	6.2	7.9	12.6	19.7	20.0	24.4	24.8	26.2	20.9	17.5	12.4	8.5	16.8
	High	15.3	21.0	28.0	36.3	31.9	34.9	35.2	37.4	31.1	32.3	23.1	16.9	37.4
	Low	-2.6	-1.9	2.0	8.0	11.7	13.8	16.1	17.9	10.8	7.1	-2.2	-0.4	-2.6
2020	Average	7.6	10.1	14.3	16.5	23.3	25.3	25.4	25.3	21.5	16	13.3	6	17.0
	High	15.5	23.6	29.4	32.9	39.5	36.9	38.9	37.5	33.5	23.7	24.4	14.6	39.5
	Low	-1.1	-2.4	3.3	4.4	12	14.9	17.9	16.7	15.4	7.4	3.2	-3.5	-3.5
2021	Average	5.7	11.7	14.3	16.6	21.4	24.1	26.8	25.3	23.3	16.7	10.7	8	17.1
	High	17.5	25.6	30.1	33.2	36.1	35.4	37.2	38.6	32.2	31.9	20.8	18.6	38.6
	Low	-6	-0.6	1.9	8.1	11.9	14.6	0	16.7	15	9.8	1.5	-4	-6
Normal temperature	Average	5.7	7.9	11.6	16.7	21.2	23.7	25.4	24.9	21.5	17	12.3	7.1	16.1
	High	20.1	25.1	33.1	36.3	39.5	38.4	39	40.3	37.8	32.1	26.6	21.3	40.3
	Low	-6.9	-6.2	-2.9	-0.2	5.7	10.7	15.4	13.4	10	2.5	-0.8	-7.1	-7.1

### - Precipitation (mm)

Year	Annual Average Total	Jan.	Feb.	Mar.	Apr.	May.	Jun.	Jul.	Aug.	Sept.	Oct.	Nov.	Feb.
2018	1417.4	4.4	10.2	36.6	67.5	115.3	204.3	566.0	156.0	180.6	46.9	15.5	14.1
2019	1070.0	3.8	9.5	33.1	54.5	136.0	68.3	265.5	230.7	171.9	67.7	26.7	2.3
2020	1251.9	8.7	7.0	24.0	28.8	46.4	111.5	167.8	695.1	83.3	52.9	6.2	20.3
2021	958.9	4.4	14.4	30.4	57.3	63.4	77.4	161.7	258.8	175.4	90.7	18.4	6.8
Normal temperature	922.7	10.5	14.4	26.0	49.8	78.4	116.8	212.4	223.3	127.7	43.1	17.8	7.5

### b. Weather in Late June and Early July

It's a relatively hot period of the year. The temperature averages 24.4°C in late June and 24.8°C in early July, and goes up gradually in between. This comes with abundant precipitation and high humidity. The average wind speeds are relatively low and horizontal visibility is high, despite the occasional occurrence of severe convective weather.

#### - Temperature

The average temperature is 24.4°C in late June and 24.8°C in early July, and the difference between day and night is about 12°C. The temperature is stable, with the highest temperatures during the day ranging from 31°C to 37°C.

#### - Precipitation

With an average rainfall of 103.5 mm, this period has more rain than other months. It mostly rains at night and only for a short duration of about 1-3 hours in the daytime. Frequent heavy rainfall which would severely impact the competition is not expected.

#### - Humidity

The average humidity between late June and early July is 82%, minimum 35% and maximum 100%.

#### - Wind

There is often wind-free or very low wind speeds from late June to early July, with an average wind speed of 1.2 m/s. Northerly wind or northeasterly wind prevails, with the lowest wind speeds from the wee hours to 8 am. Winds gather speed at noon and slow down in the evening. Convective gusts occur occasionally with a very short duration usually within 30 minutes.

#### -Visibility

The period from late June to early July has high visibility and little fog. The average horizontal visibility is 13.2 km, with a highest visibility of 45.6 km and a lowest visibility of 4.0 km.

### 4.1.4. Public Service Numbers

Fire: 119

Police: 110

Medical emergencies: 120

Traffic accidents: 122

Weather forecast: 121

Directory inquiries: 114

### 4.1.5. Other Information

Time zone: UTC+8

Voltage: 220V/50HZ

Currency: the legal tender is the renminbi (RMB), which is denominated in yuan. Currency exchange services are offered at most banks in China.

## 4.2. Key Facts and Figures

### 4.2.1. Dates

Dates: 26 June 2022 to 7 July 2022

Location: Chengdu, Sichuan, the People's Republic of China

### 4.2.2. Sports Programme

Sports: 18 sports (15 compulsory sports and three optional sports)

Events: 269 events

Venues: 49 venues, including the Opening Ceremony venue, 27 competition venues, 18 training venues and three warm-up venues.

#### 4.2.3. Opening and Closing Ceremonies

- Opening Ceremony  
Venue: Dong'an Lake Sports Park Stadium  
Date: 20:00, 26 June 2022 (Sunday)
- Closing Ceremony  
Venue: Chengdu Open Air Music Park  
Date: 20:00, 7 July 2022 (Thursday)



## 5. Service Information



## 5. Service Information

### 5.1. Arrival and Departure

a. All client groups can enter and exit China via Chengdu Shuangliu International Airport (the official port of entry). In addition, Chengdu Shuangliu International Airport, Chengdu Tianfu International Airport and Chengdudong Railway Station are set as the official points of arrival and departure with service desks where the staff of the 2021 FISU WUG will guide and assist the Customs clearance. Transportation services are available from the points of arrival and departure to the residence.

b. To ensure the convenient and efficient arrival and departure services, participants are suggested to submit the arrival and departure information to the Organising Committee in a timely manner via FISU Online Accreditation System (OAS). In case of any change, please modify the information in time through the Delegation Attaché or the corresponding department.

### 5.2. FISU World University Games Village

#### 5.2.1. Overview

The FISU WUG Village is located on the campus of Chengdu University in east downtown Chengdu, taking up approximately 800,000 square metres. It is 46 kilometres southeast of Chengdu Tianfu International Airport, 26 kilometres southwest of Chengdu Shuangliu International Airport and 12 kilometres south of Dong'an Lake Sports Park Stadium. It is 52 kilometres from the competition venue for Judo -- Jianyang Cultural and Sports Centre Gymnasium. The FISU WUG Village will open and accept check-in on 20 June 2022, and will close on 10 July 2022, operating for a total of 21 days. Both 5G and Wi-Fi are available across the village. The FISU WUG Village consists of the operational zone, an international zone, a residential zone and transportation areas.

\* Please refer to the FISU WUG Village Guide for more information.

#### 5.2.2. Operational Zone

The operational zone includes the following: the Welcome Centre, Village Pass Centre and Accreditation Centre. Bank services are provided in the Welcome Centre, where a waiting area with drinks and snacks is set.

#### 5.2.3. International Zone

The international zone serves as an important communication platform for delegations. It includes the following facilities: flag plaza, Main Information Centre, Sport Information Centre, FISU Office and meeting rooms, polyclinic, doping control station, volleyball courts, basketball courts, athletic field, swimming pool, post office, mobile services, tourist information services, barber shop, dry cleaner, licensed product stores, souvenir stores, café, games room, dance club, internet café, cinema, religious centre, volunteer centre, education activities and exhibition centre, and cultural activities centre.

#### 5.2.4. Residential Zone

The residential zone provides accommodation and dining services during delegations' stay in the FISU WUG Village. It consists of Zone A in the west, Zone B in the north and Zone C in the east (see the red zones in the FISU WUG Village Map). All three zones have access to the international zone. There is also the Resident Services Centre, delegation offices, medical rooms and laundry rooms in the residential zone. If you need bed extensions, please register at the Resident Services Centre.

#### 5.2.5. Transportation Areas

The transportation areas provide transportation services for delegations to and from competition and training venues and activity sites. They include the following: a transport mall, a parking lot and a vehicle motor pool.





FISU  
WORLD  
UNIVERSITY  
GAMES  
SUMMER

## FISU WUG VILLAGE MAP (TBD)



### 5.3. Accreditation

For detailed information on Accreditation, please refer to the Chengdu 2021 FISU World University Regulations (<https://www.fisu.net/sport-events/summer-world-university-games-events/chengdu-2021-fisu-world-university-games>) and to the Chengdu 2021 FISU World University Games HoD Manual which will be released soon. A summary of the main information related to Accreditation may be released in the next version of the Technical Handbook.



## 5.4. Transportation

### 5.4.1. Transportation for Competition and Training of Athletes and Delegation Officials

#### -Shuttle bus (Competition)

The OC will arrange the shuttle bus timetable according to the competition schedule, provide shuttle service between the FISU WUG Village and competition venues.

The schedule of the shuttle bus will reserve warm-up time upon arrival at the competition venue for athletes. Athletes and team officials can board the shuttle bus at the bus station located in the FISU WUG Village.

In circumstance that athletes and team officials miss the last bus departing from the competition venue after the game due to doping testing, press conferences or other external reasons, the executive committee will arrange vehicles to transport athletes and team officials back to FISU WUG Village from case to case.

#### -Shuttle bus (Training)

The executive committee will arrange the shuttle bus timetable according to the training schedule, provide shuttle service between the FISU WUG Village and the training venue on a regular frequency. Athletes can board the shuttle bus at the bus station located in the FISU WUG Village.

### 5.4.2 Transportation for Opening and Closing Ceremonies

The Opening Ceremony will be held at Dong'an Lake Sports Park Stadium, about 20 minutes' drive from the FISU WUG Village while the Closing Ceremony will be held at Chengdu Open Air Music Park, about 25 minutes' drive from the FISU WUG Village.

The Organising Committee will provide dedicated bus services for athletes and delegation officials to and from the FISU WUG Village and the venues for the Opening Ceremony and the Closing Ceremony on 26 June and 7 July 2022 respectively.

Before the Opening/Closing Ceremony, the Organising Committee will assign vehicles transporting delegations to the opening/closing ceremony venue by delegations.

The transportation information, including the pick-up time, vehicle details and pick-up point, will be sent to the delegations via their liaisons or assistants. All delegations are required to go through security check and arrive at the pick-up point 15 minutes before the pick-up time. After the Opening/Closing Ceremony, delegations going back to the FISU WUG Village will be picked up at the designated points in the Opening/Closing Ceremony Venue. The delegation members may take any bus with unoccupied seats. A bus will depart once it is full. Please refer to the Transportation Manual for the pick-up points after the ceremonies.

### 5.4.3 Transportation for Spectating Delegation Members

Spectating athletes will be provided with spectating buses to and from between the FISU WUG Village and the competition venues. The bus will depart from the Transport Mall in FISU WUG Village once it is full regardless of nationalities and participating sports of the passengers. The spectating athletes should get off the bus outside the security perimeter (to be confirmed) and walk into the venue with their accreditation card or ticket. If the athletes want to watch the competition of any sport, they can go to the venue by taking the shuttle buses for the competition of such sport.

### 5.4.4 Delegation Cars

#### - Assignment and USE

Delegation cars with drivers will be provided for the athletes and officials of each delegation according to the delegation size on the principles specified in the following table:

Delegation Size	Assigned Vehicle
5-24	1
25-49	2
50-99	3
100-149	4
150-199	5

Delegation Size	Assigned Vehicle
200-249	6
250-299	7
Over 300	8

After the athletes and delegation officials collect their accreditation cards in the FISU WUG Village, the HoD or his/her designated personnel can sign the vehicle use agreement at the Information Desk of the Department of Transportation in the Main Information Centre. Upon the signing of the agreement, the delegation will be entitled to use the delegation cars. The liaison of a delegation will be informed of such vehicle details as the license plate number, parking position and driver's contact for the convenience of athletes and delegation officials to make reservations.

- Service Policy

The delegation cars will be available between 07:00 and 23:00 from 20 June to 10 July 2022. The athletes and delegation officials requesting the delegation cars should make reservations three hours in advance via the delegation liaison or by filling in the transportation information on the 2021 FISU WUG Transportation APP. The delegation cars should only be used within the service hours.

Only the drivers assigned by the transportation service provider are allowed to drive the delegation cars.


## 5.5. Food and Beverages


### 5.5.1. Main Dining Hall

Athletes dining hall No. 1 and No. 2 are respectively located near the residential area A and C of the FISU WUG Village, with a total floor area of 17,000 square meters. A total of 4,340 seats are available in the dining halls with a separate halal kitchen and dining area. The hours of operation are as follows:

Date (June 2022)	Breakfast	Lunch	Dinner	Late-night Dinner
19-20 June	06:30-09:30	11:00-14:00	18:00-21:00	
21 June-7 July (20 hours non-stop service per day)	05:00-10:00 (06:30-9:30 All cuisines served)	10:00--16:00 (11:00-14:30 All cuisines served)	16:00--22:00 (17:30-21:00 All cuisines served)	22:00--01:00 (22:30-24:00 All cuisines served)
8 July-9 July	07:00-09:30	11:00-14:00	18:00-21:00	
10 July	07:00-09:30			

This timetable is subject to changes.

Accreditation cards with  symbol give unlimited access to the athletes' dining halls. Otherwise, a valid voucher will be required to

access the dining halls. If there is no  symbol on the accreditation card, then no food is allowed to be taken out of the dining halls unless otherwise specified.

### 5.5.2. Menu

The athletes' dining halls offer hot dishes including Chengdu, Mediterranean, Continental, Asian and Halal cuisines. The menu of hot meals varies on a daily basis, with a rotation of seven days. Cold dishes, room temperature food, dishes cooked over open hearths and cold and hot drinks are available. Alcoholic drinks or fresh juice are not served in the dining halls.

Each dish is served with a food description card in Chinese and English.

## 5.6. Medical Care

### 5.6.1. Overview

City-wide medical resources are coordinated to establish a full-process medical service system integrating on-site treatment, emergency transfer, emergency treatment and inpatient treatment and covering all competition and training venues, the FISU WUG Village, the Main Media Centre and official hotels to meet the needs of athletes, TOs, FISU Family, media, staff, and volunteers. The Polyclinic in the FISU WUG Village provides 24-hour medical services.

Free medical services including on-site treatment, emergency transfer and inpatient treatment of acute diseases will be provided for all accredited personnel during the 2021 FISU WUG from 20 June to 10 July 2022. The fee exemption is only applicable to the expenses incurred in China.

Smoking is not allowed in all venues, indoor spaces in the FISU WUG Village, public transportation vehicles, and outdoor spaces other than the designated smoking areas.

### 5.6.2. Polyclinic

The Polyclinic consists of 16 departments and wards, including emergency, medicine, surgery, orthopaedics and traumatology, sport medicine, dermatology, gynaecology, stomatology, ENT (Ear, Nose and Throat), ophthalmology, imaging (CT, X-ray, colour ultrasound), electrocardiogram, iatrophysics and rehabilitation, a laboratory, a pharmacy and a fever and bowel clinic with isolation rooms. Medical services are provided by the medical staff of the Polyclinic. Medical services are available from 08:00 to 23:00 while first aid and emergency transfer services are available 24 hours a day.

### 5.6.3. Medical Services in Venues

<b>Competition Venues</b>	Equipped with medical rooms, FOP first-aid points and first aid points for spectators to provide on-site treatment
	Equipped with an ambulance to transfer the patients demanding further treatment to the designated hospital
	Each medical room (first aid point) is staffed with a doctor and a nurse
	Each medical room (first aid point) is equipped with first aid medicine and equipment
	Open one hour prior to competitions and close one hour after competitions or until the last athlete leaves
<b>Training Venues</b>	Equipped with medical rooms to provide on-site treatment
	Equipped with an ambulance to transfer the patients demanding further treatment to the designated hospital
	Staffed with a doctor and a nurse
	Equipped with first aid medicine and equipment
	Open half an hour prior to training and close half an hour after training

On-site treatment and emergency transfer services are provided for all accredited personnel in the venues.

### 5.6.4 Designated Hospitals

The hospitals for the Games include nearby and referral hospitals. All of them have green channels and reserved beds to provide medical services for the accredited persons.

#### 5.6.4.1. Nearby Hospitals

Nearby hospitals are designated based on their distance to venues and the service capacities to provide medical services for the Games. In case of medical emergencies, athletes, other participants and staff will be transferred to the nearby hospitals for emergency treatment. Spectators will be transferred to the corresponding medical institutions via the urban public emergency system.

#### 5.6.4.2 Referral hospitals

Referral hospitals will provide medical services for all client groups in the closed loop on patient-specific basis. If any client groups require further treatment as determined by the on-site medical point or the nearby hospital upon the preliminary diagnosis and treatment, they will be transferred to the corresponding referral hospitals.

Referral hospital	Target group
-West China Hospital, Sichuan University -Sichuan Provincial People's Hospital -Affiliated Hospital of Chengdu University of Traditional Chinese	Critically ill patents and patients needing surgery
-Polyclinic -Affiliated Hospital of Chengdu University (Back-up)	All the participants in the closed loop
-Public Health Clinical Centre of Chengdu -The Seventh People's Hospital of Chengdu (Tianfu Campus) (Back-up)	COVID-19 patients

#### 5.7. Ticketing

Dedicated seating areas will be reserved for athletes and technical officials at the competition venues. Athletes and technical officials can enter these seating areas by presenting their accreditation cards.

#### 5.8. Climate and Weather

From three days before the first Judo match until the end of the last match, the competition venue weather forecast for the following 24 hours will be reported every day at 08:00 am, including the temperature, air pressure, relative humidity, wind speed, wind direction and precipitation.

\* Please refer to the weather service manual for more information.

## 6. Competition Information



## 6. Competition Information

### 6.1. Technical Committee

- 6.1.1. In accordance with Article 3.6.1 of the Regulations for the Chengdu 2021 FISU World University Games, a Technical Committee for Judo is set up, which consists of:

<b>FISU Judo TCC</b>	TABAKOV Sergey (RUS)
<b>FISU Judo Sub-TCC</b>	ROGNON Patrice (FRA)
<b>IJF Technical Delegate</b>	CHE Kuong Hon (MAC)
<b>Chinese Judo Association Technical Delegate (NF TD)</b>	DONG Dayong (CHN)
<b>OC Representative (Sport Manager)</b>	TAN Chaofang (CHN)

No more than two members of the Technical Committee should be of the same nationality, not including the FISU TCC.

### 6.2. Technical Regulations

- 6.2.1. The Judo events will be organised in accordance with the latest IJF technical rules. In case of disagreement in the interpretation of these rules, the English text will be regarded as authoritative.
- 6.2.2. The programme and duration of the competitions will be fixed by the FISU Executive Committee in agreement with the OC and the FISU WUG Summer ITC. In principle, the programme shall last four days and include the following events:  
Individual events: each contest will last four minutes for all gender and weight categories.

Men	Women
Up to 60kg	Up to 48kg
+60kg to 66kg	+48kg to 52kg
+66kg to 73kg	+52kg to 57kg

Men	Women
+73kg to 81kg	+57kg to 63kg
+81kg to 90kg	+63kg to 70kg
+90kg to 100kg	+70kg to 78kg
+100kg	+78kg

b. Team events: each contest will last four minutes for all gender and weight categories.

Men	Women
Up to 66kg	Up to 52kg
+66kg to 73kg	+52kg to 57kg
+73kg to 81kg	+57kg to 63kg
+81kg to 90kg	+63kg to 70kg
+90kg	

Each country is authorised to enter a maximum of fourteen athletes (seven men and seven women) as follows:

#### a. Individual competition

- Men: A maximum of one athlete per weight category
- Women: A maximum of one athlete per weight category

#### b. Team competition:

- Men: One team composed of a minimum of three athletes and a maximum of five and up to two reserves.
- Women: One team composed of a minimum of three athletes and a maximum of five and up to two reserves.

A total of seven athletes can be entered into the team competition. Teams must be composed of the athletes who are also participating in the individual categories. On the day of the team competition, the athletes may compete in their own weight category or in the category just above.

It is compulsory that all athletes listed for the match compete until the team reaches the winning result. If an athlete refuses to compete, the team will be disqualified. According to IJF regulations, if one team does not arrive for a match, the other team shall wait for a match time after which it will be declared the winner if the team has still not arrived. The first team reaching the majority of wins is declared the winner. The remaining contests will not be fought.

If there are an equal number of wins at the end of the match, a draw is done from all categories regardless if the team has a player or not (if both teams do not have a player in the same category, this category will be not included in draw). The athletes in the drawn category will refight a golden score contest. The draw is done by computer and displayed on the athlete and public scoreboards.

At the first General Technical Meeting, the HoD or his/her representative shall confirm and sign the official list of athletes for individual and team competition. Any entry not duly confirmed at the first General Technical Meeting, will not be taken into consideration except for force majeure.

In Judo, there is no possibility of appeal to the decision of the referees and judges. All actions and decisions taken in accordance with the 'majority of three' rule by the Referee and Judges shall be final. In no case the athletes or their representatives can consult the referees or the Referee Commission. The athletes or their representatives cannot appeal to the decisions and any attempt to approach the OC on this subject might provoke the exclusion from the Judo events.

All points that are not covered in these regulations can be found in the regularly updated IJF Sport and Organisation Rules (SOR).

#### 6.2.3. Advanced payment

Two months before the opening ceremony of the FISU World University Games, countries entering Judo must confirm their participation with an advanced payment of 50% of the participation fees per entered athlete and official.

The advanced payment shall be directly collected by the OC.

#### 6.2.4. Weigh-in

The official weigh-in for each category will take place in the FISU WUG Village at 20:00 the day before the competition in each category. All athletes must be at or under their allowable weight. After the official weigh-in for individual competition, all athletes must be within five percent of their allowable weight. There will be random weight checks before each event. For team competition, no official weigh-in is required. However, on the team competition day, there will be random weight checks and any team athlete weighed must be within two kilograms of their maximum weight.

Weigh-in must be in strict conformity with IJF regulations and under the supervision of IJF Technical Delegate.

#### 6.2.5. Seeding

The position in individual and team competitions will be determined according to their FISU/IJF ranking. The position at the previous FISU World University Games shall precede over that at IJF. No athletes or teams will be seeded if there is no ranking.

#### 6.2.6. Draw

Two delegates and technical officials per delegation may attend the General Technical Meeting and conduct public draw for individual events before 15:00 of 28 June 2022. The lists of athletes shall be confirmed and signed at the meeting by coaches or HoD or his/her representative. The athlete lists for individual events can be changed before the technical meeting (only changes to athletes are allowed). Changes to the events shall be accompanied by an explanation and finished before the technical meeting. The Technical Delegates shall position the seeded athletes/teams as separate as possible. The top four athletes/teams will be seeded, while the positions of other athletes/teams will be drawn by computer. Once the draw by weight category has been made and the results released at the General Technical Meeting, the order can not be changed, nor the names of participants be added.



The delegations may get two copies of draw result and receive competition information at the Sport Information Centre (SIC) at FISU WUG Village.

The lists of delegations and athletes for team events shall be submitted to FISU TCC Office at the competition venue before 15:00 of 1 July 2022, when public draw will be done at the meeting room of the competition venue. On the competition day, the participating delegations may replace ranked athletes for competition in accordance with the rules. Changes to lists of participants shall be confirmed and signed by coaches or HoD, and submitted to the FISU TCC Office at the competition venue 30 minutes before each round of competition.

### 6.3. Competition Format

The Judo competition uses a quarter-final (last 8) repechage elimination bracket system. A 'Round Robin' system will be used for the competition if there are up to five athletes/teams. If a tie exists after four minutes, the athletes in the drawn category will refight a golden score contest, which has no time limit. The first scoring or the third penalty will decide the winner.

After the team events, the team reaching the majority of wins is declared the winner. If there are an equal number of wins at the end of the match, a draw is done from all categories, and the athletes in the drawn category will refight a golden score contest.

#### 6.3.1. Athlete bibs and sewing services

24 June to 2 July 2022, all participating countries/regions shall have their athlete bibs sewn at the FISU WUG Village Sewing Service Centre. Jianyang Cultural and Sports Centre Gymnasium only offers temporary services for judogi sewing during the Games.

Service hours of the FISU WUG Village Sewing Service Centre:

09:00–20:00 from 24 June to 2 July.

Jianyang Cultural and Sports Centre Gymnasium: 08:30 to the end of the competition of the day from 29 June to 2 July.

### 6.4. Sport Entries and Eligibility

6.4.1. Only delegations with athletes will be approved as official delegations participating in the FISU World University Games. (cf. Article 5.2 of the Regulations for the Chengdu 2021 FISU World University Games) Entry Deadlines

Form	Date
Intention of Participation Form (PI)	Closed
General Entry Form (G)	26/10/2021
Quantitative Entry Form (Q)	26/02/2022
Individual Entry Form (I)	26/05/2022
Final confirmation of athletes and referees	General Technical Meeting

#### Entry Requirements

- Intention of Participation, General, Quantitative, Nominative and Individual Entries shall be submitted through the FISU OAS in order to meet the required entry deadlines. ITO entries shall be submitted to the OC pursuant to applicable procedure and deadline.
- Entries submitted after the required deadlines will not be taken into consideration, except in the event of force majeure. Late entries will be kept on a reserve list and evaluated by FISU case by case.
- Individual Entry forms of athletes from a non-Member Association must be countersigned by the NF or by the NOC. The NF of the concerned sport or the NOC has to submit an official request to FISU General Secretariat. Upon approval FISU will provide them an access to the FISU Online Accreditation System.

#### 6.4.2. Eligibility

The CIC shall be responsible for controlling the eligibility of athletes and accreditation of delegations, officials and athletes at the FISU World University Games;

At the individual entry deadline, one month prior to the opening ceremony of the FISU World University Games, the CIC shall verify and validate the documents submitted by the delegations in the FISU Online Accreditation System to justify, in particular:

- the authenticity of the national entries (cf. Article 1.5 of the Regulations for the Chengdu 2021 FISU World University Games)
- the academic status of the athletes (cf. Article 5.2.2 and 5.2.3 of the Regulations for the Chengdu 2021 FISU World University Games)
- the nationality and age of the athletes (cf. Article 5.2.4 of the Regulations for the Chengdu 2021 FISU World University Games)

## 6.5. Competition and Training Venues

Venue	Usage	Capacity	Distance from FISU WUG Village	
			Time	Distance
Jiayang Cultural and Sports Centre Gymnasium	Competition venue	3,068	60min	52km
Jiayang Cultural and Sports Centre Gymnasium	Warm-up venue	300	60min	52km
Huaxi Campus Gymnasium, Sichuan University	Training venue	200	28min	21km

## 6.6. Competition Schedule

Date	Duration	Event	M/W	Competition stage
29 June (Wednesday)	10:00-14:00	Up to 48kg	W	Preliminaries and repechages
		+48kg to 52 kg	W	
		+52kg to 57kg	W	

Date	Duration	Event	M/W	Competition stage	
29 June (Wednesday)	10:00-14:00	Up to 60kg	M	Preliminaries and repechages	
		+60kg to 66kg	M		
	16:00-end of the match	Up to 48kg	W	Final and medal ceremony	
		+48kg to 52 kg	W		
		+52kg to 57kg	W		
		Up to 60kg	M		
30 June (Thursday)	10:00-14:00	+60kg to 66kg	M	Preliminaries and repechages	
		+57kg to 63kg	W		
		+63kg to 70kg	W		
	16:00-end of the match	+66kg to 73kg	M	Final and medal ceremony	
		+73kg to 81kg	M		
		+57kg to 63kg	W		
	1 July (Friday)	10:00-14:00	+63kg to 70kg	W	Preliminaries and repechages
			+66kg to 73kg	M	
			+73kg to 81kg	M	
		16:00-end of the match	+70kg to 78kg	W	Final and medal ceremony
			+78kg	W	
			+81kg to 90kg	M	
+90kg to 100kg			M		
+100kg			M		
+70kg to 78kg			W		
2 July (Saturday)		10:00-14:00	Women's Team	W	Preliminaries and repechages
			Men's Team	M	
		16:00-end of the match	Women's Team	W	Final and medal ceremony
	Men's Team		M		

## 6.7. Training Schedule

Date	Duration	M/W	Delegation	Venue	Notes
24 June to 2 July	08:00–09:30 09:45–11:15 11:30–13:00 13:15–14:45 15:00–16:30 16:45–18:15 18:30–20:00	M/W	All delegations	Huaxi Campus Gymnasium, Sichuan University	1. On 18 August, the day of 2021 FISU WUG Opening Ceremony, the venue is open for training only from 08:00 to 09:30 and from 09:45 to 11:15.  2. All delegations shall book training sessions in the SIC of the FISU WUG Village on a 'first come, first served' basis.
29 June to 2 July	08:30–end of the match	M/W	All delegations	Jiayang Cultural and Sports Centre Gymnasium (athletes of the day)	

Note: The specific training schedule is prepared by the OC and approved by the TCC.

## 6.8. Technical Meetings

Date	Duration	Location	Activities
27 June (Monday)	09:00	Jiayang Cultural and Sports Centre Gymnasium	Venue inspection
27 June (Monday)	11:00	Jiayang Cultural and Sports Centre Gymnasium	First Technical Committee meeting

Date	Duration	Location	Activities
28 June (Tuesday)	15:00	FISU WUG Village	1. General Technical Meeting and public draw 2. Technical Official meeting with ITOs
2 July (Saturday)	After the end of the match	Jiayang Cultural and Sports Centre Gymnasium	Final Technical Meeting

Note: Technical Meetings schedule may be subject to changes.

- 6.8.1.** There shall be a Technical Committee for each sport in the programme of a FISU World University Games, which shall consist of:
- at least one FISU TCC who shall be a member of the FISU WUG Summer ITC for the sport concerned;
  - one representative of the OC for the sport concerned;
  - the Technical Delegate of the appropriate NF of the organising country;
  - the Technical Delegate of the appropriate IF;
  - additional experts who may be appointed to assist the Technical Committee as appropriate.
- The CT will be assisted in its work by adequate personnel. The OC shall appoint one administrative secretary to the Technical Committee who shall take the minutes of all meetings. No more than two members of the Technical Committee should be of the same nationality, not including the FISU TCC.
- 6.8.2.** During the days prior to the start of the sports events for which he/she is responsible, the FISU TCC shall convene the following meetings:
- the meeting of the Technical Committee, which the staff members of the OC for the sport concerned may also attend as observers;
  - the first General Technical Meeting, to which the members of the Technical Committee and a representative from each country competing in the sport concerned shall be invited.
- 6.8.3.** The first meeting of the Technical Committee shall:
- prepare the first General Technical Meeting;

- b. define the criteria to set up a jury of appeal (if appropriate according to the rules and regulations of the IF);
- c. decide on the appointment system for Technical Officials;
- d. approve the detailed programme for their sport;
- e. propose the nomination of additional experts to assist the Technical Committee as appropriate.

#### 6.8.4. The first General Technical Meeting shall:

- a. approve the competition and training schedules for each sport;
- b. appoint a jury of appeal (as appropriate) according to the rules of the IF of the sport concerned;
- c. take emergency measures to ensure the smooth technical running of the competitions if necessary;
- d. confirm the official list of the athletes. The HoD or his/her representative shall confirm and sign the official list of athletes for individual and team competition, and may submit entry forms. Any entry not duly confirmed at the first General Technical Meeting, will not be taken into consideration except for force majeure.

This entry form shall contain the accreditation card number attributed to the participant by the CIC, the given name, the family name and the athlete's number.

The athletes that are not approved by the CIC will not be authorised to take part in the competition.

### 6.9. Technical Officials

#### 6.9.1. Nomination

All ITOs are nominated by IJF and approved by the FISU Judo TCC. These ITOs must be invited by the OC no less than three months before the opening ceremony of the FISU World University Games.

The OC and the NF will appoint NTOs to complement the team of technical officials required for Judo.

Following the concerned FISU sport regulations of each particular

sport, ITOs are entitled to receive a per diem in the amount established in the FISU-ISF partnership agreement for the entire days of duty (including travel days).

Participating teams must pay an ITO contribution fee to the OC in order to cover the cost (travel expenses, accommodation, full board and the per-diem according to the FISU-IJF partnership agreement) of the international referees from IJF according to the pro-rata of teams registered.

The fixed ITO contribution fees per athlete/team participating in the concerned sport are indicated in the Technical Regulations Article 4.4.2.

The cost (travel expenses, accommodation, full board and the per-diem according to the FISU-IJF partnership agreement) of the Technical Sub-Committees members is to be borne by the OC.

#### 6.9.2. Number of Technical Officials

There shall be 20 ITOs:

- 15 IJF referees
- Two computer system operators
- One replay system operator
- One member of the referee commission
- One member of the sport commission

The number of NTOs shall be agreed between the OC and the FISU TCC.

### 6.10. Protest and Appeal

During the FISU World University Games, protests of a non-technical nature as allowed in article 3.2.2. d) of the Chengdu 2021 FISU World University Games Regulations shall be presented to the FISU President or Secretary General/CEO, by the HoD or his/her deputy in writing no later than six hours after the incident, and no protest received after this time shall be considered. Each protest shall be accompanied by a deposit of EUR 50, which shall be returned only if the protest is considered justified.

- 6.10.1.** All decisions taken by the FISU Executive Committee are final.
- 6.10.2.** To challenge the eligibility of an athlete from another country, the HoD must make a written protest to the FISU Executive Committee. The CIC shall be authorised to investigate the eligibility of the participant concerned. Only the HoD, or his/her deputy, shall be authorised to make such a protest.
- 6.10.3.** Any protest of a sport or disciplinary nature must reach the Jury or other competent authority, according to the regulations laid down by the appropriate IF. Such protest must be accompanied by a deposit, the amount of which is set in line with the IF regulations, if not otherwise specified in the technical regulations of the concerned sport (cf. Sports Regulations).
- 6.10.4.** Each HoD or his/her deputy is authorised to lodge an appeal against the decision of the Jury. This appeal must be submitted in writing to the Jury of Appeal or competent authority in accordance with the regulations of the appropriate IF.
- 6.10.5.** Any decision of the Jury of Appeal or equivalent authority of a sport is final and must be reported immediately to the HoD of the country concerned.  
Any sport disciplinary situation, which cannot be satisfactorily resolved by the sport technical committee and the sport-specific disciplinary regulations, will be reported to the FISU Disciplinary Committee for further action to be taken.  
Where appropriate, a report will also be sent to the IF concerned.

### 6.11. Late-Athlete Replacement Policy

The OC has the right to charge countries not meeting the Individual Entry deadline with an additional late-entry fee of EUR 200 for each participant entered after the entry deadline. Late entries will only be accepted in special circumstances and with the approval of FISU.  
In the event that an athlete gets injured or ill, the late-athlete replacement policy applies.

### 6.12. Equipment and Uniforms

The equipment for the Judo competitions of 2021 FISU WUG will be provided by the OC and approved by FISU and IJF. Judogis (white and blue) must be in conformity with IJF regulations and go through check before competition.

Judogi shall be provided by the OC if it does not comply with IJF regulations.

Sport Equipment	Specification	Brand
Judo mat	2m*1m*5cm	Taishan
Spare judogi	40 sets	Taishan

### 6.13. Doping Control

#### 6.13.1. Overview

Doping control (in and out of competition) during the Chengdu 2021 FISU World University Games will be strictly conducted in accordance with the FISU Anti-Doping Regulations and the 2019 World Anti-Doping Code to ensure a fair competition and promote sound sportsmanship. Doping control will begin from the official opening date of the FISU WUG Village until the end of the Games. Participating athletes must abide by relevant regulations and follow given guidelines when they have been selected and notified for testing. Any athlete who refuses to undergo testing, or interferes with the testing process, will be considered to have committed a doping violation and be subject to disciplinary action.

#### 6.13.2. Doping Control Station (DCS)

Doping control stations are designed in accordance with WADA and FISU regulations. Samples for testing are collected in the Doping

Control Station of each competition venue as well as at the Doping Control Centre (Doping Control Station) located within the FISU WUG Village.

#### 6.13.3. Athlete Selection

FISU Medical Committee will select athletes based on rank in a competition at random and will do target testing.

#### 6.13.4. Escorting Persons

Athletes will be notified and escorted by at least one chaperone as needed.

#### 6.13.5. Report to Doping Control Station

The athlete must report to the Doping Control Station in a reasonable amount of time from selection. The athletes will be allowed to attend award ceremonies, press conference, etc., as long as they remain under supervision of his/her chaperone/s.

#### 6.13.6. Sample Collection

Athletes selected for testing will be notified immediately following the competition and will be under constant visual supervision by a chaperone until they enter the Doping Control Station. At the station, sample (urine and/or blood) will be collected in a vessel, then sealed and submitted for transportation to the WADA approved laboratory under the supervision of a Doping Control Officer.

#### 6.13.7. Athletes' Obligations

- a. The athletes must have their Accreditation with them at all times.
- b. The athletes must report all medications taken in the prior week (including nutrition supplements, minerals, vitamins, etc.).
- c. athletes must present their TUE Document if they have one.

#### 6.13.8. Testing Organisation and Results

The collected sample will be tested in the laboratory within 48 hours and results will be directly communicated to the FISU Medical Committee Chair. Athletes who are tested positive in the doping test may be disqualified and subject to disciplinary action.

#### 6.13.9. Additional Controls

A team may request for doping control tests to be performed on an athlete who has not been selected for doping control.

Examples of indications for this request are for National Records, or Target Testing. These athletes must complete the "FISU Doping Control Request Form". They will then be escorted to the Doping Control Station for sample collection and testing. The testing fee shall be borne by the applying unit. The results will be managed by FISU or appropriate national organisation.

Price List for Anti-Doping Analyses of Urine and Blood Samples (tbc by FISU)

Urine (routine items)	RMB	Note
Urine (test U)	1800.00	If no abnormal reaction, the test report will be issued within 10 working days upon receiving sample
Urine (test ESAs)	2300.00	If no abnormal reaction, the test report will be issued within 10 working days upon receiving sample
Urine (test hGHrf)	1500.00	If no abnormal reaction, the test report will be issued within 10 working days upon receiving sample
Blood (test hGH)	1500.00	If no abnormal reaction, the test report will be issued within 10 working days upon receiving sample

Payment method: please pay in the Doping Control Station of the Medical Centre in the FISU WUG Village.

#### 6.14. Awards and Medals

A grand and solemn medal ceremony will be held after each competition.

#### 6.14.1. Medal Ceremony

- a. The athletes of the top three teams in the finals must attend the medal ceremony.
- b. 10 minutes prior to the ceremony, the medallists will be ushered to the waiting area by the venue sport team coordinator. In case of a no show of medallists, the medals and mascots are delivered to the relevant HoD or appointed delegate.
- c. The medallists are expected to mount the podium in the official team uniforms. However, they are allowed to attend the official ceremony wearing sports uniforms when the ceremony takes place immediately after the competition. The medallists are not allowed to take any national/regional flags or any other national, cultural or religious symbols on the podium. They must not wear hats, caps or sunglasses on the podium.
- d. The national/regional flag or flag of the Games will be raised for medallists and FISU anthem will be played. All medallists and relevant officials are required to face the flags while they are being raised and the FISU anthem is being played.
- e. After the flag-raising ceremony, medallists are expected to take photos with award presenters and then with other medallists.
- f. After photos are taken, the medalists shall proceed to the mixed zone for interview and then escorted by the venue sport team staff.
- g. The announcement will be in English and Chinese in principle, but exceptions will be found in French-demanding and French-origin sports in which English, Chinese and French will be provided.
- h. Any dispute regarding protocol is resolved by the persons in charge of Protocol within the FISU.

#### 6.14.2. Diploma

Diplomas will be awarded in accordance with the FISU Protocol. Please refer to Art. 6.2.2 of the Chengdu 2021 FISU World University Games General Regulations.

#### 6.15. Media Interviews

Media centres are set up in all competition venues to facilitate interviews and reports by the accredited media. After the competitions, all athletes must exit the field of play through the mixed zone, where they will be interviewed by the media. Athletes will be guided by the press conference room staff to attend the press conference after the medal ceremony. All press conferences will be supported with English and Chinese interpreting services.

#### 6.16. Timing and Scoring

(The information will be provided after the suppliers of the Department of Information Technology are confirmed.)

#### 6.17. Results

Results are available at the official website and the SIC.

#### 6.18. Sport Information Services

Official website: [https://www.2021chengdu.com/cn/Sport Information Centre](https://www.2021chengdu.com/cn/Sport-Information-Centre)

18 Sport Information Desks will be set up during Chengdu 2021 FISU World University Games to provide information efficiently to delegations and team officials visiting the SIC which is located on ground floor of the International Zone of the FISU WUG Village. Department of Sports and Venue Operation will provide the following information and services for delegations at the SIC during the Games:

- Competition schedule
- Training schedule
- Start lists
- Competition results
- Weather information
- Inquiry and printing of information from Sport Information System terminal

- Technical meetings information
- Distribution of Diploma of Honour.

#### Opening hours of SIC:

07:00 to 22:00 from 20 June 2022 to 10 July 2022 (21days).

#### Sport Information Desk

Sport Information Desks are set up at all competition venues to provide the following information and services for delegations during the Games:

- Competition schedule
- Training schedule
- Start lists
- Competition results
- Technical meetings information

Operation hours of Sport Information Desks in the venues may vary according to the sport programme of competition venues. It will open one hour before the first match of the day and close one hour after the last match.

## 7. Transportation Schedule





## 7. Transportation Schedule

The bus service timetable of per sport will be arranged according to the competition schedule. The departing time and departing frequency will be scheduled on a daily basis depend on the traits of event and venue operation time on that day. The first bus will arrive at the competition venue in advance of the first event on that day. The specific depart timetable to be determined.

## 8. Appendices



## 8.1. Competition Schedule

		Chengdu 2021 FISU World University Games Competition Schedule													26 June - 7 July 2022		
Event	Date	Comp. Days	Sat.	Sun.	Mon.	Tue.	Wed.	Thu.	Fri.	Sat.	Sun.	Mon.	Tue.	Wed.	Thu.	Medal Events	Final Venue
			25 Jun	26 Jun	27 Jun	28 Jun	29 Jun	30 Jun	1 Jul	2 Jul	3 Jul	4 Jul	5 Jul	6 Jul	7 Jul		
			Day -1	Day 0	Day 1	Day 2	Day 3	Day 4	Day 5	Day 6	Day 7	Day 8	Day 9	Day 10	Day 11		
Opening / Closing Ceremonies				🎆											🎆		
Archery	5					●	●	●	●	●	●					10	Shuangliu Modern Pentathlon Centre Equestrian Arena
Artistic Gymnastics	5					●	●	●	●	●	●					14	Dong'an Lake Sports Park Multi-Purpose Gymnasium
Athletics	6						●	●	●	●	●	●	●	●		50	Shuangliu Sports Centre Stadium
Badminton	8				●	●	●	●	●	●	●	●	●	●		6	Shuangliu Sports Centre Gymnasium
Basketball	10		●	●	●	●	●	●	●	●	●	●	●	●		2	Fenghuangshan Sports Park Gymnasium
Diving	8			●	●	●	●	●	●	●	●	●	●	●		15	Jiayang Cultural and Sports Centre Gymnasium
Fencing	6			●	●	●	●	●	●	●	●	●	●	●		12	Pidu Sports Centre Gymnasium
Judo	4					●	●	●	●	●	●	●	●	●		16	Jiayang Cultural and Sports Centre Gymnasium
Rhythmic Gymnastics	3			●	●	●	●	●	●	●	●	●	●	●		8	Chengdu Sport University Gymnasium
Rowing	3							●	●	●	●	●	●	●		15	Sichuan Water Sports School
Shooting Sports	5			●	●	●	●	●	●	●	●	●	●	●		18	Chengdu Shooting Sport School
Swimming	7			●	●	●	●	●	●	●	●	●	●	●		42	Dong'an Lake Sports Park Aquatics Centre
Table Tennis	8			●	●	●	●	●	●	●	●	●	●	●		7	Hi-tech Zone Sports Centre Gymnasium
Taekwondo	7			●	●	●	●	●	●	●	●	●	●	●		23	Wangjiang Campus Gymnasium, Sichuan University
Tennis	9			●	●	●	●	●	●	●	●	●	●	●		7	Sichuan International Tennis Centre
Volleyball	11		●	●	●	●	●	●	●	●	●	●	●	●		2	Xipu Campus Gymnasium, Southwest Jiaotong University
Water Polo	13	●	●	●	●	●	●	●	●	●	●	●	●	●		2	Shuangliu Modern Pentathlon Centre Swimming and Fencing Hall
Wushu	4			●	●	●	●	●	●	●	●	●	●	●		20	Chengbei Gymnasium
Number of Medal Events Per Day				17	21	29	41	28	50	34	20	21	7	1	269		
Number of Sports Per Day		1	3	12	13	16	17	16	14	12	8	6	3	1			

●	Competition Day
●	Number of Medal Events